



PFI

A quarterly newsletter for those wanting to keep abreast of the latest pellet fuels industry news.

The Pellet Fuels Institute (PFI) is a North American trade association promoting energy independence through the efficient use of clean, renewable, densified biomass fuel.



- **June Market Update,** page 5
- **PFI Conference Registration Form,** page 7
- **Annual Conference Preview,** page 9
- **Government Affairs Updates,** pages 12

President's Message

In prior President's Messages, I have written about the importance of a strong association, robust government affairs effort, and even how the data collected by the Energy Information Administration is key to our industry. This time, I'd like to take a short break from offering my opinion to ask for yours. What is important to you and your business? What can the Pellet Fuels Institute do more of or do better to help you and to promote densified biomass?



Scott Jacobs, PFI President

Over the years, PFI has been blessed with a very diverse membership, including fuel manufacturers, associate members, and all manner of supplier members. We have been able to maintain a strong focus on densified biomass, which has allowed us to speak authoritatively on behalf of our industry. The association also has had a core of very involved members that serve on committees, as committee chairs, and on the Board of Directors. While it would be great if each of our members could find the time to, say, participate in a committee, I realize that is not realistic. Many of you are members of multiple trade associations and organizations, many times across multiple industries. Not to mention the more than forty hour week that you likely put in at the mill or selling and servicing equipment, for example.

Just as PFI could not function well without its committee structure and Board of Directors, nor could it function well without its members whose contributions, though less visible in some cases, are similarly critical. The simple fact that a company decides to maintain membership in PFI and pay its dues each year demonstrates a commitment to the organization and our industry. Seeing value in having a trade association that advocates on behalf of densified biomass makes membership in PFI a wise investment. These same companies are the ones who may sign up for a booth at the PFI Annual Conference, sponsor an event there, or advertise in this publication, on the PFI website or in the weekly *Pellet Wire*. If you attend the PFI Conference

continued on page 3

PFI BOARD OF DIRECTORS

Executive Committee

President - Scott Jacobs, Ozark Hardwood Products
Vice President - Stephen Faehner, American Wood Fibers
Secretary/Treasurer - Derek Nelson, Forest Business Network

Board Members

Mike Curci, Andritz
Rob Davis, Forest Energy Corporation
Lori Hamer, Hamer Pellet Fuel
Keith Hankins, Pennington Seed
Troy Jamieson, Somerset Pellet Fuel
Ron Leofsky, Allegheny Pellet Corp.
Bruce Lisle, Biomass Thermal Energy Ltd.
Jase Locke, Bliss Industries, LLC
Darrell Robinson, Shaw Resources
Darryl Rose, Energex Pellet Fuel
Bob Sourek, Bear Mountain Forest Products
Jeff Thiessen, Dansons Inc.
Richard Thomas, Courtland Hearth & Hardware
John Utter, Lignetics, Inc.
Chris Wiberg, Timber Products Inspection

STAFF

Jennifer Hedrick, Executive Director Email: hedrick@pelletheat.org
Jason Berthiaume, Membership & Government Affairs Associate Email: berthiaume@pelletheat.org
John Crouch, Director of Public Affairs Email: crouch@pelletheat.org

Visit us at
www.twinportstesting.com

More
Than Just
Results

Fuels Laboratory
Biomass Analysis
Pellet Quality Analysis
Consulting Services

Twin Ports Testing Inc.
1301 N 3rd St Superior WI 54880
715-392-7114 800-373-2562

DISCLAIMER

Statements of fact and opinion are the responsibility of the authors submitting articles to PFI and do not imply an opinion on the part of the Directors or membership of PFI. PFI reserves the right to edit text submitted for space purposes. Material may be reproduced by any member or affiliate organization. Non-members are requested to contact the PFI office at (703)522-6778 for permission to reprint any article contacted herein.

CALENDAR OF EVENTS

Do you have an item for the Calendar of Events?
Email it to berthiaume@pelletheat.org

- | | |
|----------------------|--|
| July 28, 2013 | PFI Board of Directors Meeting
The Grove Park Inn
Asheville, NC |
| July 28-30, 2013 | PFI Annual Conference
The Grove Park Inn
Asheville, NC
www.pelletheat.org/events |
| September 9-11, 2013 | RETECH 2013
Marriott Wardman Park
Washington, DC
www.retech2013.com |
| September 9-12, 2013 | International Training Seminar on Biomass Heating 2013
Linz, Austria
http://www.oec.at/en |
| October 27-29, 2013 | Exporting Pellets Conference
Fontainebleau Hotel
Miami Beach, FL
www.theusipa.org/conference |

President's Message, continued from page 1


in Asheville, July 28-30, take a moment to stop by the exhibit hall to thank these companies.

Undoubtedly, PFI member companies do positive things for our industry each day that aren't recorded in committee minutes or in the pages of the PFI Newsletter. Whether it is inviting a local official to tour your facility, or penning a letter to the editor in support of biomass to your local paper, there are numerous relatively painless actions that can go a long way. As I've often said, the true strength of our association isn't in the size of our membership or budget. Both of those pale in comparison to other energy trade groups, even most renewables. Our most compelling aspect is the story that we have to tell: clean, renewable, locally-sourced and manufactured energy, available to average citizens, that employs thousands, and supports many more jobs in the areas that need it most. That is a message that's tough to beat.

Normally, this is the part of the article where I would make an impassioned, reasoned and assuredly successful plea for action on your part. Breaking from that, I instead ask you think about a call to action for PFI. How can we help you take our great message to the consumer, the elected official, even the skeptic that can't see the working forest for the trees?

One great thing about PFI is that there is no shortage of opportunities to offer your feedback on what we do and how we can do it better. Whether it is through committee service, responding to a conference or membership survey, or your vote in the Board elections, you help to chart the course. Likewise, you are invited to reach out to me, as President of the Board of Directors, or staff with your thoughts and ideas. Another thing that is wonderful about PFI is that each member company has a say, whether you sell half a million tons of product or are a new member trying to build a market in your area.

president@pelletheat.org



Biomass Pellet and Briquetting Plants

Entire Process from Raw Materials to Finished Product

- Plant Design
- Process Controls
- Plant Commissioning
- Field Service
- Energy Systems
- Dryer Systems
- Densification
- Materials handling


SOLAGEN
(503) 366-4210 www.SolaGenInc.com

Serving the Biomass Industry Since 1985

ONE Partner

FOR YOUR COMPLETE BIOMASS PROCESS
Power, efficiency and consistency for every application:

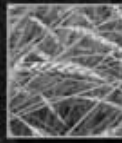
- Particle size reduction
- Fine grinding
- Flaking
- Cracking
- Pelleting
- Cooling



CPM
Your Partner in Productivity

800-428-0846
WWW.CPM.NET

@CPMRoskamp
CPM Roskamp Champion



BIOMASS PROCESSING with BLISS.

Bliss Industries, LLC is a leading manufacturer of wood and biomass pelleting equipment for residential, commercial and industrial pellet fuel. Founded in 1981, Bliss Industries maintains a reputation of manufacturing the most efficient, reliable and well-built equipment in the industry. Developed from a design concept proven worldwide, the range of Pioneer Pellet Mills continues to expand. Overall reliability, maximum efficiency, ease of operation and maintenance combine to provide lower operating costs to each owner. With the ability to provide a wide range of die sizes, die speeds and drive power, Bliss can more than meet your requirements for high quality at a reasonable cost.

Bliss also manufactures an extensive line of hammermills for biomass size reduction and processing.



**Proudly
Manufactured in the USA**



Impacting Industries Worldwide.

Bliss Industries, LLC
P.O. Box 910 • Ponca City, Oklahoma U.S.A. 74602
Phone (580) 765-7787 • Fax (580) 762-0111
Internet: <http://www.bliss-industries.com>
E-mail: sales@bliss-industries.com

June 2013 MARKET UPDATE

Producer Comments:

“Too many manufacturers and not enough demand.” –Northeast

“The late end to winter helped boost YTD sales. It’s been an average early buy for us, but we are expecting demand this season due to the overall lack of inventory in the marketplace, as compared to last year.” –Midwest

“Early buy went very well. Could sell more if we could produce more.” -Southeast

WOOD PELLETS

(average price per ton, medium to large wholesale customer, FOB plant)

United States:

Northeast: \$143-180 range. Manufacturers report being equal or ahead of this time last year, in terms of tons sold. Operating capacities range from 70-100% and most manufacturers anticipate an upward price trend.

Midwest: \$110-155 range. Plant operating capacities range from 50-100%. Manufacturers report sufficient access to raw materials and average to good year-to-date sales volumes. Manufacturers anticipate an upward price trend and are ahead of this time last year in terms of tons sold.

Southeast: \$110-175 range. Manufacturers anticipate an upward price trend. Operating capacities range from 98-100%. Manufacturers report being equal to or ahead of this time last year, in terms of tons sold.

News Brief

PFI Standards Program

In mid-June, PFI Executive Director Jennifer Hedrick joined staff and auditors from Timber Products Inspection and the American Lumber Standard Committee, the oversight body of the PFI Standards Program, in a visit to New England Wood Pellet to tour the facility and learn about their quality control practices initiated through the PFI Standards Program. In March, NEWP became the first company to qualify under the PFI pellet fuel standards program.

The PFI Standards Program is a third party certification program for residential and commercial grade densified biomass fuel. For more information about the program and how your company can enroll please contact PFI staff or visit: <http://pelletheat.org/pfi-standards>.



Joe Powers of New England Wood Pellet (NEWP) reviews testing procedures during a June walkthrough of NEWP's Jaffrey, NH facility.



Hammermills

Finish grind dry wood fiber for pellet production. Fine grind wood fiber for fuel use in drying.

◀ *WSM Model 4460S Hammermill*

Screeners

Screen "fines" both before and after drying for improved throughput and product quality.

WSM Model 140HDS Oscillating Screen ▶



Heavy Duty Shredders

Convert green chips & hogged wood into a consistent fiber size before drying.

◀ *WSM Model 4284SP with dual 300 HP drives*

From Start to Finish we've got you covered

WSM has proven itself in the wood industry since 1947 - manufacturing mill duty screening and grinding machinery that provides high volume production, reliable operation, and low maintenance. Put our experience to work in your pellet operation!

Tough, Reliable, Built to Last.

Browse online westsale.com



**West Salem
Machinery**

(800) 722-3530 (503) 364-2213
info@westsale.com
www.westsale.com

PFI ANNUAL
CONFERENCE
July 28-30, 2013
The Grove Park Inn
Asheville, NC



CONFERENCE REGISTRATION

Company/Organization: _____
 Attendee(s): _____
 Address: _____
 City: _____ State: _____ Zip Code: _____ Phone: _____
 Email: _____

REGISTRATION TYPE (Registration includes conference meetings, receptions, lunch, breakfasts, Monday evening dinner, and breaks.

	Number		Fee per person	Subtotal
PFI/HPBA Member	_____	x	\$395	_____
Spouse/Guest of Member	_____	x	\$325	_____
Non-Member	_____	x	\$495	_____
Spouse/Guest of Non-Member	_____	x	\$425	_____
Golf Registration	_____	x	\$155	_____
Tour Of Biltmore Estate	_____	x	\$110	_____
TOTAL				\$_____

GOLF TOURNAMENT REGISTRATION (Sunday, July 28th, 9:00am tee-time; spouses and guests invited and encouraged to play) \$155 fee includes green fees and cart. On-site golf registrations cannot be accommodated. Please pre-register. Rental clubs are available (for an additional, on-site payment). Please circle Y (yes) if you plan to rent clubs.

Name _____ Handicap (optional): _____ Club Rental (Y / N)

HOTEL ACCOMMODATIONS

For hotel reservations, contact The Grove Park directly at **1-800-438-5800** or you may reserve a room online at <http://www.grovetparkinn.com/>, under "Make Reservations".

Return to: Jason Berthiaume, Pellet Fuels Institute, 1901 N. Moore Street, Suite 600, Arlington, VA 22209 or via Fax @ (703) 522-0548 or email @ berthiaume@pelletheat.org.

Cancellation/Refund Deadline: Refunds for meeting, golf and the tour of the Biltmore Estate will be made only if a request is received by PFI on or before July 12, 2013. After that date, no refunds will be made. Refunds will be issued for 85% of the purchase price of general conference registration, golf and the tour of the Biltmore Estate. Refunds for the exhibitor/sponsorship packages will be issued for 50% of the purchase price.

REGISTRATION DEADLINE: Conference, Golf, and Biltmore Tour Deadline is Friday, July 19th

KAHL Wood Pelleting Plants

Energy-saving



Quality worldwide.



AMANDUS KAHL USA Corporation · 380 Winkler Drive, Suite 400, Alpharetta · GA 30004-0736
Phone: 770-521-1021 · Fax: 770-521-1022 · sales@amanduskahlusa.com

AMANDUS KAHL GmbH & Co. KG · SARJ Equipment Corp., Mr. Rick B. MacArthur · 29 Golfview Blvd., Bradford, Ontario L3Z 2A6
Phone: 001-905-778-0073 · Fax: 001-905-778-9613 · rbmacarthur@sympatico.ca · www.akahl.us

PFI Annual Conference Preview

By: Jennifer Hedrick, Executive Director

The PFI Annual Conference is just weeks away and the final details are being hammered out as I write. The Conference Committee, under the leadership of Troy Jamieson of Somerset Wood Pellets and Stephen Faehner, of American Wood Fibers, has assembled an agenda that will look at some of the most timely issues facing the industry. We have a number of exhibitors and sponsors participating in the conference—we've carved out significant time for interaction between exhibitors and attendees—and are grateful for the number of industry leaders who will be participating in the events over the three days.

We're pleased to have Carlton Owen of the U.S. Endowment for Forest & Communities giving our conference keynote. Carlton has had a lengthy and impressive career in the forestry sector and has been an advocate for the efficient harvesting and use of biomass.

I first heard Carlton speak last year at the Northeast Biomass Heating Expo and had the opportunity to sit down with him one-on-one to better understand his views on the future of the industry. Carlton and I spoke at length about the value of commodity checkoff programs, which raise funds within the industry to encourage market development through research and promotions initiatives.

You no doubt remember some very successful marketing campaigns of years past—"Beef: It's What's for Dinner", "The Incredible Edible Egg", and the "Got Milk?" campaign, all of which are run through the USDA.

PFI and BTEC are working with USDA, with some guidance from Mr. Owen, to explore the feasibility of such a program within the pellet industry. I suspect you will hear more on Mr.

Owen's views on this issue during his keynote at the conference.

Our advocacy work in Washington continues and we'll have a report on the June fly-in from our contract lobbyist Pat Rita, as well as developments on policy such as the Farm Bill and the newly introduced Biomass Thermal Utilization (or BTU) Act.

Dan Len from the U.S. Forest Service (USFS) will speak about current regional and national initiatives of focus by the agency, including the Farm Bill and access to USFS funding. He will highlight new programs being undertaken by USFS, including developing greater alliances between the agency and industry groups.

More deliberate partnership amongst industry and government is a positive step and will help solidify alliances amongst the various industry trade associations and collaborators. The timing couldn't be more significant, especially as industry detractors bang their drum with greater force and call into question the practices of the entire biomass supply chain. (An entirely separate column could be devoted to this topic, but you should be aware that PFI has been working with allies on Capitol Hill and in other parts of Washington to counter this harmful messaging).

The Conference Committee has assembled an excellent panel to discuss the importance of sustainable practices, looking at harvesting of biomass in a sustainable manner, the impact of the EU's requirements for fuel shipped from North America and how this impacts exporters and the greater biomass supply chain. Pete Madden will share the perspective of Plum Creek, one of the largest landowners in the U.S., and Harold Arnold will give an overview of how his mill is meeting sustainability requirements. Seth Walker of RISI will outline the EU's policies on sustainability and the potential

continued on page 10

Annual Conference Preview, continued from page 9

impact these requirements will have on the industry—and not simply those companies exporting pellets.

For a time, it was easier, though I'm sure we can all agree naïve, perhaps, to view the export and domestic markets as separate—an “us and them” if you will. Now as the market grows and the number of mandates issued by the EU increases, the implications for all companies and markets are being hashed out. Domestic policy and sustainable practices, not to mention carbon accounting, are focal points of board room discussions and conference agendas, right along with safety concerns and market development.

Wood Pellet Association of Canada (WPAC) executive director, Gordon Murray, has become a fixture of the PFI Annual Conference and he'll again update us on market and policy developments within Canada as well as research being pursued by the WPAC. He'll be sitting on a panel with Johan Granath from Eckman, who will provide a bird's eye view of the European market and explain the needs of the Italian residential bagged market, which is seeking to expand its level of imports from North America. Amanda Lang from Forisk rounds out this panel and she'll highlight recent developments in the U.S. export market and projections for coming years.

Other highlights of conference program include:

- A panel of fuel and appliance manufacturers discussing ways in which to grow North American domestic markets
- Companies participating in the PFI Standards Program share their perspectives on the program, including developing the QA/QC program required for program enrollment and best practices their companies have implemented in testing

- A panel looking at a range of mill operations issues, including fire safety and permitting

Outside of the educational sessions, conference goers will have substantial opportunity to view new products or developments through interaction with exhibitors. The conference welcome reception, which kicks off at 7pm on Sunday, July 29, will feature hors' d' oeuvres and cocktails amongst the backdrop of supplier exhibits-- the first of many opportunities throughout the conference to meet industry suppliers and view new technologies. Exhibit space is still available and I encourage you to reach out to Jason Berthiaume of our staff to learn how your company can participate.

For the competitive crowd, PFI offers its annual golf tournament, with golfers teeing off in a scramble format at 8am on Sunday morning. And, for those looking to experience a bit more of Asheville's history, a guided tour of the Biltmore Estate is being offered. This event coincides with the golf tournament and is a highlight of any trip to Asheville. More information about both of these events can be found on the PFI conference page on our website, as well as information on other activities that you may enjoy while in Asheville.

For those of you who haven't attended the PFI Annual Conference previously, I encourage you to call the office to talk to Jason Berthiaume or me to learn more about how your business can benefit from attending, as well as to hear about other opportunities offered at the conference.

And, as always, you may find out further details on the conference section of the PFI website www.pelletheat.org/pfi-annual-conference

We're excited to see you in Asheville and look forward to welcoming you to the PFI Annual Conference.

hedrick@pelletheat.org



Total System Responsibility:

**Design
Engineer
Fabricate
Service**

Reliable. Consistent. Quality.



Call today to learn more about M-E-C Industrial Dryer Systems.

1402 W. Main | Neodesha, Kansas 66757 USA | 620.325.2673 | www.m-e-c.com



biomassenergylab.com

GLOBAL LAB SERVICES

International & Domestic Biomass Fuel Markets

**ISO 17025 Accredited
for ASTM and CEN/EN Standards**

Certificate of Analysis for Pellet/Biomass Export



Timber Products Inspection

Accredited by the American Lumber Standard Committee as a **Testing Laboratory** and an **Auditing Agency** for the Pellet Fuels Institute's **Densified Biomass Fuel Standards Program**.



Quality Inspection and Testing Services since 1969

1641 Sigman Road
Conyers GA 30012

218-461-2579

Prevent Fires and Explosions with

◀ FLAMEX®

336.299.2933
www.sparkdetection.com



FLAMEX® systems can be customized to address the fire hazards inherent in your process:

Spark Detection & Suppression to eliminate sparks emanating from rotary dryers and hammermills.

Automatic & Manual Deluge Systems for dust collectors, bins and silos.

"Hot Particle" Detectors to detect overheated pellets from pelletizers and coolers.

High Speed Abort Gates and Backdraft Dampers for material handling and clean air ducting.

Let us help you lower risks, increase productivity and comply with regulations.

Government Affairs Update

By: *Pat Rita, Orion Advocates*

PFI has kept active in the government affairs arena in recent months, tracking important legislation, and advocating on behalf of our industry in the nation's capital. Temperatures may be reaching the 90's in Washington, DC, but biomass is still at the forefront in a number of areas.

Farm Bill

In early June, the Senate voted to pass S. 954, the Agriculture Reform, Food, and Jobs Act of 2013, a five year reauthorization of the Farm Bill. The bill passed by a filibuster proof margin of 66-27.

From a renewable energy perspective, the Senate-passed measure did not change from the version that was reported from the Senate Agriculture, Nutrition and Forestry Committee earlier this spring. Here is a quick snapshot of funding levels in the Senate bill for programs of interest:

REAP: Provides the Rural Energy for America Program (REAP) \$68.2 million in mandatory funding for each of the fiscal years 2014-2018. REAP provides grants and loans to rural businesses to invest in their operations. Projects range from energy efficiency upgrades at commercial facilities to installing, replacing or upgrading biomass boilers and heating systems. The program is designed to be a rural job creation/retention initiative and has been popular. The bill also simplifies the application process to make REAP more accessible to applicants.

BRDI: Provides the Biomass Research and Development Initiative (BRDI) with twenty-six million dollars annually in mandatory funding through 2018. BRDI provides grants for research and development and demonstration projects to promote innovation in biobased product development.

CWEP: The Community Wood Energy Program

was amended to include a grant program for the purchase of biomass heating systems, biomass heating products (such as wood chips, pellets and advanced biofuels) and delivery and storage of biomass heating products. The program is authorized at five million dollars annually, with no mandatory funding.

Biopreferred: Revises the USDA's biobased procurement and labeling program to recognize forest products, with a specific mention of wood pellets.

Advanced Biofuel Producer Payments: The Bioenergy Program for Advanced Biofuels—which has provided direct payments to pellet producers—was authorized at a level of twenty million dollars per year through 2018, but not provided any mandatory funding.

Attention now turns to the House of Representatives, which, as we write, is considering the measure. Recall that the house bill, H.R. 1947, contains no mandatory funding for any of the Farm Bill energy programs.

While we are generally pleased with the total funding number in the Senate version, we will continue to press for mandatory funding for the Bioenergy Program for Advanced Biofuels, amongst other programs.

BTU Act of 2013

On May 22nd, Senator Angus King (I-ME) introduced the Biomass Thermal Utilization Act of 2013, along with co-sponsor Senator Susan Collins (R-ME). The BTU Act has been referred to the Committee on Finance and has picked up another co-sponsor in Senator Jeanne Shaheen (D-NH). The legislation would amend the Internal Revenue Code of 1986 to include biomass heating appliances for tax credits available for energy-efficient building property and energy property. PFI has been working with Senator King's office over the last several months to help craft the bill, which has garnered broad support across varied industries.

continued on page 13

PFI will continue to monitor the progress of this legislation and update members on how they can help in the effort to see the bill passed.

PFI Fly-In

PFI held a legislative fly-in from June 25-27. The eleven members in attendance held over twenty five meetings with members of Congress and the Administration. In addition to the Farm Bill, and BTU Act of 2013, the attendees and PFI staff, discussed a variety of issues related to the densified

biomass industry. In recent years, these fly-ins have evolved from an effort to inform and educate those in Washington, DC about our industry, to advocating for specific legislation or regulations that benefit it. We have fostered many allies on Capitol Hill and it is important that we remain visible and active on this front. PFI typically holds two fly-ins per year, one in the summer, and one in the winter, and is always looking for members to attend, particularly those who are interested but have not done so before.

Lastly, while a good portion of PFI's government affairs work happens at the federal level, there is also important work to be done at the state and local level. PFI members have been active in supporting grassroots legislation, hosting plant visits, and even writing letters to the editor of their local newspapers. States and localities are often a testing ground for legislation, so policy that works well there will often spread elsewhere. If you see opportunities for PFI to help in your grassroots efforts, don't hesitate to contact a member of the staff.



OUR AIR SYSTEMS KEEP YOUR BUSINESS MOVING.

And in the right direction. Kice pneumatic conveying systems keep wood material flowing and biofuel operations growing. Comprised of industry-leading components, our systems can easily be expanded to include dust control, hammermill air assist, pneumatic conveying, and cooler air assistance for peak performance.

When you order a Kice system, you have a partner for the long haul. Our products are built to last, with durable parts we produce in-house. We can design, manufacture and assemble pneumatic systems specifically for your pelleting operation, and our automated electrical systems keep your plant running safely and on schedule.

At Kice, success is in the air. sales@kice.com / 316.744.7151

Kice Industries, Inc. 5500 N. Mill Heights Dr. Wichita, KS 67219-2358 kice.com



BAGGING
SYSTEMS



PALLETIZING
SYSTEMS



LOAD SECURING
SYSTEMS



BAGGER, PALLETIZER & STRETCH WRAPPER



TO LEARN MORE, VISIT PTCHRONOS.COM

How Reporters Miss the Forest and the Trees When Covering Wood Bioenergy Markets

By: Brooks Mendell, Ph.D., President and VP of Research, Forisk

While the general public's understanding of wood bioenergy remains incomplete, recent reporting on the issue fails to meaningfully inform readers on the status of woody biomass supplies and the actual development of wood bioenergy markets in the U.S. In fact, several articles suffered from three common errors we observe in major media coverage:

1. Failure to provide context.
2. Improperly assigning "causal" relationships.
3. Errors of fact.

For example, Roger Harrabin of the BBC, in a March 5, 2013 article "*Biofuels: MPs to Consider Subsidies for Power Stations*" about potential subsidies for using wood at power stations in the UK, reported that power producer Drax plans to convert approximately half of the boilers at its coal-fired power station in Yorkshire to wood pellets. Harrabin notes that this would "burn more wood than the entire output from the UK's timber industry." And how much wood would that be?

This took four minutes to track down and summarize using the online "ForesSTAT" database from the United Nations. The UK produced one-half of one percent of the world's industrial timber in 2011. The U.S. timber industry is 32 times bigger. EU timber production is over 38 times bigger. This failure to provide context for UK's timber industry is like reporting on hamburger sales in India or breweries built by BYU graduates. While these could prove interesting, the numbers may prove trivial.

A more recent May 28, 2013 report by Mr. Harrabin, "*Renewable Energy: Burning US Trees in UK Power Stations*", further addresses the growing trade of wood pellets from the U.S. to the UK. While the story gives ink to all

sides, it lacks the context to illuminate the scale or likelihood of operational impacts on U.S. forests from UK pellet demand. In fact, bioenergy is a relatively small business in the U.S. and will remain that way for the foreseeable future. Readily available research and studies conducted by private firms and conservation groups, while sometimes diverging on potential implications, generally align with the facts on the current state of affairs. One study is "*Biomass Supply and Carbon Accounting for Southeastern Forests*" conducted for the National Wildlife Federation and the Southern Environmental Law Center (with whom Mr. Harrabin produced an interview). The study incorporates academic and private studies, and provides necessary context relative to potential policy outcomes.

In "*Limits to Growth: Wood Pellet Production in the U.S.*", Forisk addresses the issue by quantifying how the actual growth of bioenergy relative to available resources in the U.S. can be understood. In "*Three Realities of Wood Bioenergy and Forest Owners*", Forisk specifies areas of direct relevance to timberland owners and legislators that forest analysts understand well and can address with authority and data: bioenergy project failure rates, forest landowner behaviors that increase long-term supplies, and wood supplier adaptability. New wood markets do not create a frenzy of forest harvesting. Forest owners and wood suppliers adapt through improved forest management, incremental growth of logging operations and utilization of previously underutilized wood raw materials.

On Tuesday May 28, 2013, the Wall Street Journal published a front page story related to wood bioenergy markets that managed to score the trifecta and feature all three common errors appearing in media reports related to wood and timber industries. Posted online on May 27th, the article, "Europe's Green-Fuel Search Turns to American's Forests" by Justin Scheck and Ianthe Jeanne Dugan contains factual errors, fails to provide context or

continued on page 16

measures of scale, and improperly implies causal relationships. Ugh. A few examples include:

- The article does not scale UK demand to the U.S. forest industry. During normal economic conditions, the U.S. forest industry consumes ~500 million tons of wood per year. Currently, the U.S. is exporting on the order of 2 million tons of pellets per year.
- “...Europe doesn’t have enough forest to chop for fuel...” Not true. Europe has 25% of the world’s forests. While the article notes that “many restrictions apply” to Europe’s forests, it does not question the quality, usefulness or soundness of these restrictions. The bottom line is that Europe may actually have enough wood, but chooses not to use it.
- “Many of the pellet-making plants springing up in the U.S....are near pine plantations established long ago partly to serve the now-slumping wood-pulp market.” The reference to the “slumping” pulp market is factually incorrect and easily knowable. This is a critical miss because the U.S. pulp and paper mills dominate the market for the low valued wood raw materials of interest to wood pellet producers.

The *Wall Street Journal* also dwells on the topic of swamp logging in North Carolina. Few people would look to swamp logging as inherently desirable or preferable for a host of reasons. However, it represents between 1% and 4% of related forestry activities, and the article skirts the primary economic drivers and realities for U.S. forest management. Regardless wood pellet demand in the UK, forest owners in the U.S. will not overhaul their long-term forest management strategies or harvest practices for pellet markets. The economics don’t make sense. The U.S. remains a “sawtimber” market where landowners grow trees for lumber production.

In forestry, a natural tension exists between the unfettered exercise of private property rights

and the biodiversity preferences of third-party conservation groups. This “tension” is important. Market incentives help ensure that private forests remain productive and forested, while spotlights on best management practices that protect soil integrity, water quality and wildlife habitat support long-term forest health. This tension, like a tug of war, puts someone in the mud once in a while. Sometimes a landowner cuts trees you might not cut, and sometimes states or groups seek a rule that restricts private property owners in an unreasonable way. That is part of the back-and-forth.

Wood bioenergy in the U.S. faces limits to growth. No one will be vacuuming U.S. forests to feed UK power plants. The economics, logistics and sustainability of such strategies fail on multiple levels. This is why markets in other regions such as South America, Russia and Canada continue to scale up capacity. The facts, context and market relationships highlight a stuttered, evolving wood bioenergy market in the U.S. that continues to feel its way forward as part of the large, established wood-using forest industry.

Young Guns Mentor Program

By: HPBA staff

The Young Guns have officially launched a mentor program which they hope will pair together professionals in the industry. Everyone needs to learn, so why not reach out to HPBA and PFI “pros in the know”?! Sign up to be a mentor and feel free to pass an invitation to those who you think should be a part of this program. A sign up form is available by emailing youngguns@hpba.org.

PFI Fuel Manufacturer Members

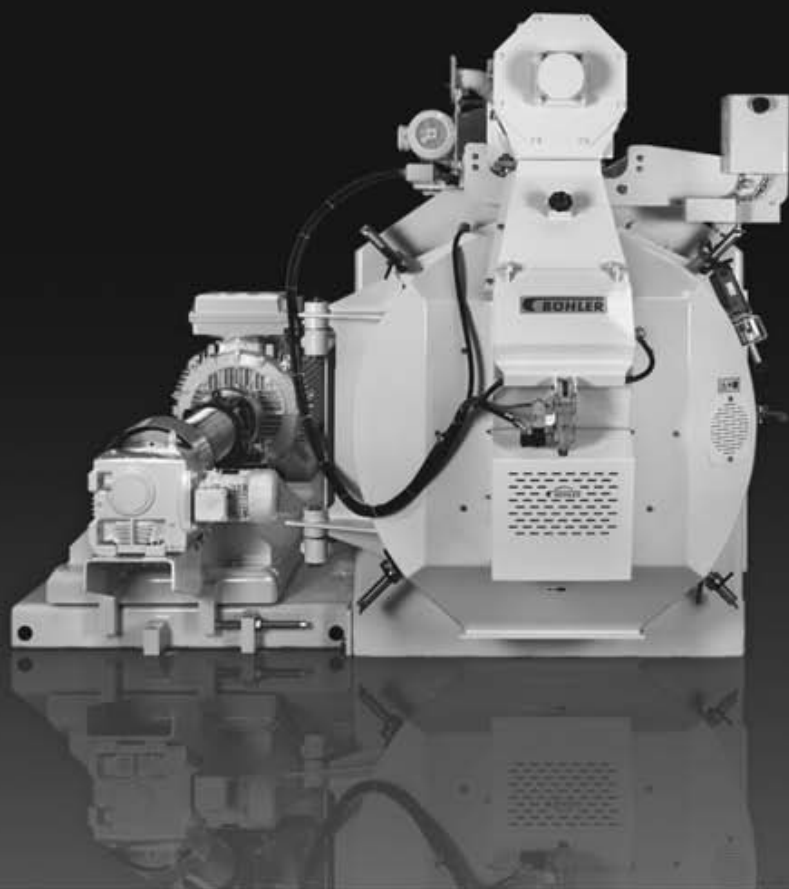
Company	Contact	Location	Phone	Website
Allegheny Pellet Corporation	Ron Leofsky	Youngsville, PA	(814)563-4358	www.woodpelletfuels.com
American Wood Fibers	Rich Whiting	Columbia, MD	(410)290-8700	www.awf.com
Appalachian Wood Pellets, Inc.	Don Wagner	Kingwood, WV	(304)329-4000	www.appalachianwoodpellets.com
Bear Mountain Forest Products Inc.	Bob Sourek	Cascade Locks, OR	(503)334-1558	www.bmfp.com
Cottles Island Lumber Co. Ltd.	Andy Philpott	Summerford, NF	(709)629-7565	www.cottles.ca
Curran Renewable Energy, LLC	Patrick Curran	Massena, NY	(315)769-5970	www.curranpellets.com
Dansons Inc.	Jeff Thiessen	Edmonton, AB	(780)455-5377	www.dansons.com
Dejno's Inc.	Mike Auch	Kenosha, WI	(262)657-1210	www.dejnos.com
Easy Heat Wood Pellets	Billy Hoskins	S. Charleston, OH	(800)782-7517	www.easyheatpellets.com
Energex Pellet Fuel, Inc	Darryl Rose	Mifflintown, PA	(717)436-0015	www.energex.com
Energex Pellet Fuel, Inc.	Max Beraud	Lac-Megantic, QC	(819)583-5131	www.energex.com
Fiber By-Products, Corp.	Cory Schrock	White Pigeon, MI	(269)483-0066	www.fiberby-products.com
Fiber Energy Products AR, LLC	Stephen DeVoe, Sr.	Mountain View, AR	(870)269-7930	www.fiberenergyproducts.us
Forest Energy Corporation	Mike Lundy	Show Low, AZ	(928)537-1647	www.forestenergy.com
Fulghum Graanul, LLC	John Bradley	Augusta, GA	(706)651-1000	www.fulghumfibrefuels.com
Georgia Biomass	Ken Ciarletta	Waycross, GA	(912)490-5293	www.gabiomass.com
Hamer Pellet Fuel Co.	Lori Hamer	Kenova, WV	(304)453-6381	www.hamerpellet.com
Hassell & Hughes Lumber Company	Jonathan Littlejohn	Collinwood, TN	(931)724-9191	www.greenwaypellets.com
Henry County Hardwoods	John Neese	Paris, TN	(731)642-4181	
Indeck Energy Services, Inc.	Nunzio Maniaci	Buffalo Grove, IL	(847)520-3212	www.indeck-energy.com
Kirtland Products	Tom Monley	Holland, MI	(231)582-7505	www.kirtlandproducts.com
Koetter and Smith, Inc.	Nathan Smith	Borden, IN	(812)923-5111	www.koetersmith.com
Lee Energy Solutions	Davis Lee, Sr.	Crossville, AL	(256)528-7290	http://leeenergysolutions.com/
Lemhi Valley Premium Pellets	Rockie Walker	Salmon, ID	(208)756-2612	www.qbcorp.com
Lignetics of West Virginia, Inc	John Utter	Glenville, WV	(304)462-4848	www.lignetics.com
Lignetics, Inc.	Kenneth Tucker	Sandpoint, ID	(208)263-0564	www.lignetics.com
Maine Woods Pellet Co LLC	Bob Linkletter	Athens, ME	(207)654-2237	www.mainewoodspelletco.com
Nature's Earth Pellet Energy LLC	Jana Simard	West Palm Bch, FL	(561)688-7393	www.freedomfuelusa.net
North Idaho Energy Logs	Clark Fairchild	Moyie Springs, ID	(877)564-4897	www.northidahoenergylogs.com
O'Malley Timber Products, LLC	Matt O'Malley	Tappahannock, VA	(804)445-1118	www.omalleywoodpellets.com
Ozark Hardwood Products, LLC	Scott Jacobs	Seymour, MO	(417)935-9663	www.ozarkhardwoodproducts.com
Pacific Coast Fiber Fuels	Stan Elliot	Shelton, WA	(360)462-2801	www.olympuspellets.com
Pellheat Inc.	Peter Skrgic	Greensburg, PA	(724)850-8169	
Pennington Seed Inc.	Keith Hankins	Greenfield, MO	(417)637-5978	www.penningtonseed.com
Shaw Resources	Darrell Robinson	Shubenacadie, NS	(902)758-2095	www.shawresources.ca
Somerset Pellet Fuel	Troy Jamieson	Somerset, KY	(606)678-2842	www.somersetpelletfuel.com
Southern Indiana Hardwoods, Inc.	Gene Merklely	Huntingburg, IN	(812)326-2053	www.sihlumb.com
Southern Kentucky Hardwood Flooring	Blake Gerughty	Gamaliel, KY	(270)457-3618	
Spearfish Pellet Company	Everett Follette	Spearfish, SD	(605)642-2363	
Turman Hardwood Pellets	Ruth Elliott	Fredericksburg, VA	(540)287-2976	
Varn Wood Products	George Varn	Hoboken, GA	(912)458-2187	

PFI Associate & Supplier Members

Company	Contact	Location	Phone	Website
ACORE	Tom Weirich	Washington, DC	(202)393-0001	www.acore.org
Amandus Kahl USA Corporation	Martin Johnson	Alpharetta, GA	(770)521-1021	www.akahl.us
Andritz, Inc.	Mike Curci	Roswell, GA	(770)640 2511	www.andritz.com/feed-and-biofuel
Biomass Thermal Energy Ltd.	Bruce Lisle	Mifflintown, PA	(717)436-9300	www.thebiomassboiler.com
Biomass Thermal Energy Council	Joe Seymour	Washington, DC	(202)596-3974	www.biomassthermal.org
Bliss Industries, LLC	Chad Cook	Ponca City, OK	(580)765-7787	www.bliss-industries.com
BM & M Screening Solutions	Collin Jackson	Surrey, BC	(800)663-0323	www.bmandm.com
Bruks Rockwood Inc.	Steve Bennett	Alpharetta, GA	(678)994-0024	www.bruks.com
Buhler Inc.	Sven Lessmann	Plymouth, MN	(763)847-9900	www.buhlergroup.com
California Pellet Mill	Ron Fuller	Waterloo, IA	(319)232-8444	www.cpmroskamp.com
Certified Laboratories	Jim Rodgers	Irving, TX	(800)527-7850	www.certifiedlabs.com
Chantland MHS	Steve Hartmann	Humboldt, IA	(515)332-4045	www.chantland.com
Continental Biomass Industries	Ed Donovan	Newton, NH	(603)382-0556	www.cbi-inc.com
Dorssers Inc.	Peter Timmermans	Blenheim, ON	(519)676-8113	www.dorssers.com
Evergreen Engineering	Aaron Edwards	Eugene, OR	(541)484-4771	www.evergreenengineering.com
FLAMEX Inc.	Allen Wagoner	Greensboro, NC	(336)299-2933	www.flamexinc.com
Forest Business Network LLC	Craig Rawlings	Missoula, MT	(406)240-0300	www.forestbusinessnetwork.com
Green Globe Services, LLC	Rashid Shakir	Columbia, MD	(443)204-4885	www.greenglobeservices.com
Hershey Equipment Co., Inc.	Richard Hyde	Lancaster, PA	(314)378-2693	http://hequip.com/
Kesco, Inc.	Jason Kessler	Fort Mill, SC	(803)802-1718	www.kescosolutions.com
Kice Industries, Inc.	Jeff Kice	Wichita, KS	(316)744-7151	www.kice.com
Kissito Healthcare, Inc.	Jennifer Bell	Roanoke, VA	(540)265-0322	www.kissitohealthcare.org
Lachenmeier	Jeff Lukan	Glenview, IL	(877)859-7205	www.lachenmeier.com
Laidig Systems, Inc.	Mike Schuster	Mishawaka, IN	(574)256-0204 x236	www.laidig.com
LM Machinery and Equipment LLC	Wladimir Labeikovskiy	Pittsburgh, PA	(412)608-8528	http://www.lm-machinery.net
M-E-C Company	Gary Follmer	Neodesha, KS	(620)325-2673	www.m-e-c.com
MoistTech	Adrian Fordham	Sarasota, FL	(805)378-1160	www.moisttech.com
MVTL Laboratories	Jeff Reiser	Bismarck, ND	(701)258-9720	www.mvtl.com
Northeast Lumber Manufacturers Assoc.	Jeff Easterling	Cumberland, ME	(207)829-6901	www.nelma.org
PA Biomass Energy Association	Melissa Britcher	Harrisburg, PA	(717)230-1772	www.supportpabiomass.org
Pacific Lumber Inspection Bureau	Jeff Fantozzi	Federal Way, WA	(253)835-3344	www.plib.org
Premier Tech Chronos	Francois Kirouac	Riviere-du-Loup, QC	(418) 868-8324	www.ptchronos.com
Primary Packaging Inc.	Duff Long	Bolivar, OH	(800)774-2247	www.primarypackaging.com
Process and Storage Solutions	Donald Land	Rainsville, AL	(256)638-1838	www.processandstorage.com
Prodesa North America Corporation	Jose Ignacio Pedrajas	Alpharetta, GA	(770)-849-0100	www.prodesa.net
Rethceif Packaging	Tim Fiechter	Ossian, IN	(260)622-7200	www.rethceif.com
Rotochopper, Inc.	Monte Hight	St. Martin, MN	(320)548-3586	www.rotochopper.com
Solagen Incorporated	Francis Sharron	Deer Island, OR	(503)366-4210	www.solageninc.com
Thomas Enterprises Inc.	Tom Weihe	Dublin, OH	(614)793-9432	
Timber Products Inspection	Chris Wiberg	Conyers, GA	(770)922-8000	www.tpinspection.com
Trinity Packaging Corporation	John Ericson	Armonk, NY	(800)999-3970	www.trinitypackaging.com
TS Manufacturing	Riley Smith	Lindsay, ON	(705)324-3762	www.tsman.com
Twin Ports Testing, Inc.	Gregg Patterson	Superior, WI	(715)392-7114	www.twinportstesting.com
University of New Brunswick	Michael Albright	Fredericton, NB	(506)453-4507	www.wstc.unb.ca
Vecoplan Midwest, LLC	Ron King	New Albany, IN	(812)923-4992	www.vecoplanmidwest.com
Wood Pellet Association of Canada	Gordon Murray	Revelstoke, BC	(250) 837-8821	www.pellet.org

Maximum production. Low operating cost. The Bühler RWPR-900 is the ideal pellet mill for your biomass applications. The RWPR was designed with massive roll bearings to withstand the extreme pressures of biomass pelleting. To ensure ease of operation the pellet mill is equipped with a simple V-belt drive system with minimal moving parts. This top of the line pellet mill provides an effective and efficient pelleting solution. For more information please visit www.buhlergroup.com.

Bühler Inc., PO Box 9497, Minneapolis, MN 55440, 763-847-9900, buhler.minneapolis@buhlergroup.com, www.buhlergroup.com



Heavy Duty Pellet Mill

Maximum Production.

Flexible controls optimize process

Low operating costs.

Rollers, dies and other wear parts are designed for maximum performance and longevity to increase uptime and profitability.

Safe operation.

A combined overload shear pin and belt slip monitor protect the pellet mill from overloads or foreign material entering the die.

Innovations for a better world.

BUHLER

PELLET FUELS INSTITUTE

1901 North Moore Street
Suite 600
Arlington, VA 22209
(703) 522-6778

ANDRITZ

Biomass Pelleting Trust the industry leader



ANDRITZ Pellet Mills

ANDRITZ designs solutions based on highly advanced key machinery for wood grinding and pelleting, inclusive of chippers and dryers for the processing of wet and/or green wood prior to the pelleting process.

- **100 to 1000 HP**
- **1 ton to 15 tons**
- **Gear driven**
- **Belt Driven**
- **Industry proven**

Mike Curci
Fiber Technologies Division
Capital Sales Manager, Biomass

ANDRITZ Inc.
1115 Northmeadow Pkwy
Roswell, GA 30076, USA
Phone: +1 850 557 7674
Fax: +1 770 640 2521
Mike.Curci@andritz.com
www.andritz.com